

September - December 2015

# platform



platformartsbelfast.com

1 Queen Street Belfast, BT1 6EA



## GALLERY 1

### Softening the Stone

Chris Campbell-Palmer

4 Sept - 24 Oct 2015

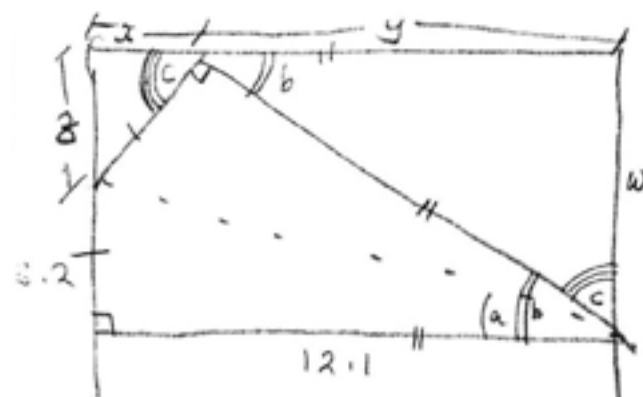
Opening 6 - 10pm, Thurs 3 Sept

The essence of bygone eras reproduced in bright plastics and peddled to a new generation. Cosmic drool with an awkward Eastern affectation. Our newfound historical perspective evoked by reproductions and revivals. A culture of malleable forms only coagulating as long as we are able to look.

Softening the Stone is an exhibition of sculpture, video and relief works. The installation examines artificial sceneries and historical amalgamations utilising liquid processes to produce set forms. The works suggest the backdrop of a journey where the abstracting nature of time is exposed. These examples of the Disneyfication of archaeology describe how the smallest reminiscence can develop into the most extravagant fiction.

Belfast born, London based artist Chris Campbell-Palmer presents a body of new work for Platform Arts. Using a frenzy of material manipulation, rubberised textures and obtuse stylisations, Softening the Stone playfully interacts with the formalities of cultural signifiers by displaying stylised depictions of long-gone worlds.

[cargocollective.com/chriscampbell-palmer](http://cargocollective.com/chriscampbell-palmer)



## GALLERY 2

### Imbroglia

Brónach McGuinness

4 - 18 Sept 2015

Opening 6 - 10pm, Thurs 3 Sept

Brónach McGuinness' installation pieces come from an interest in the meaning of aesthetics, and a concern for maintaining the void within an artwork. Her work, the result of her six month residency at Platform Arts, develops on from assemblage pieces and slight structural interventions to create an artwork that is at the same time both elegant and obtrusive.

[bronachmcguinness.com](http://bronachmcguinness.com)

## EVENT

### Artists Moving Image NI

AMINI

AMINI will present an artists' moving image event including screenings, talks and the first meeting of the Belfast LUX Critical Forum.

Guest speakers will include Ben Cook director of LUX and Daniel Fitzpatrick from Plastik - Festival of Artists' Moving Image.

For further information please visit: [platformartsbelfast.com](http://platformartsbelfast.com)

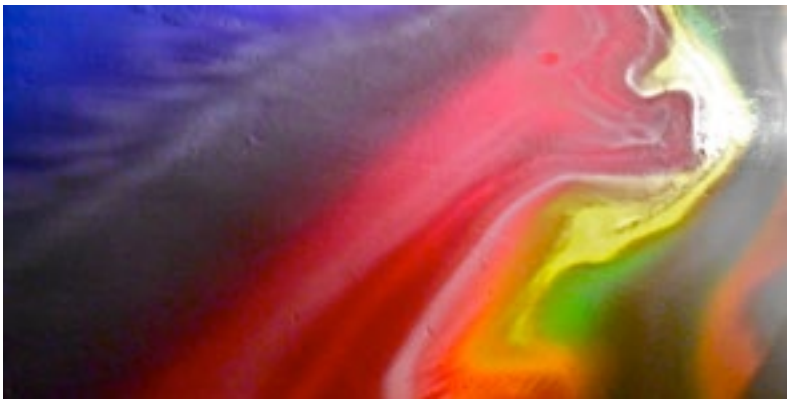
THESE







# TO NO NE D



## GALLERY 1 Eidolon

**Helen MacMahon**  
2 - 24 Oct 2015  
Opening 6 - 9pm Thurs 1 Oct

Eidolon is an experimental piece, prompted by a fascination with the impact of light, colour and space on the senses. It explores the complex psychological relationship between artworks and the viewer, in particular how once the perceived artwork passes the threshold of the senses it is created anew as each mind creates its own eidolons or idealised versions, resulting in limitless, unique variations.

*[helenmacmahon.wordpress.com](http://helenmacmahon.wordpress.com)*



## EVENT Belfast Open Studios

Fri 23 & Sat 24 Oct 2015  
11am - 5pm

Belfast Open Studios is an open invitation to the public to come see how artists work, to explore artistic methodologies and to have a glimpse into the creative processes that culminate in the artworks often shown in galleries, museums, art centres, artist led spaces and various venues.

Join us and have a look at what artists have been up to at Platform Arts!

*[platformartsbelfast.com/members](http://platformartsbelfast.com/members)*



## GALLERY 1 The Present Instant

**Richard O'Sullivan & Matilde Meireles**  
6 - 25 Nov 2015  
Opening 6 - 9pm, Thurs 5 Nov

What happens when we fix time in the present instant and refuse its progression? What happens when the moment stands fixed in the flow of time continuing around it? Technology allows us to catch and still the present instant, and this exhibition will bring together two works that use video, static imagery and sound to do so. As such, the projects seek to illuminate our particular ways of seeing time and place, and the relationships of our media to temporality.

*[richardosullivan.net](http://richardosullivan.net) / [matildemeireles.com](http://matildemeireles.com)*



## GALLERY 2 Extremely Brief Impressions

**Vanya Lambrecht Ward & Rachel Ni Chuinn**  
6 - 25 Nov 2015  
Opening 6 - 9pm, Thurs 5 Sept

Installation artist Vanya Lambrecht Ward and sound artist Rachel Ni Chuinn present their first joint exhibition. The works are a philosophical alluvium, perceptions left by traveling through space, remnants of thought, agglomerations of senses. Sound and sculpture collaborate to create a shifting interior.

*[vanyalambrechtward.com](http://vanyalambrechtward.com) / [rachelnichuinn.com](http://rachelnichuinn.com)*

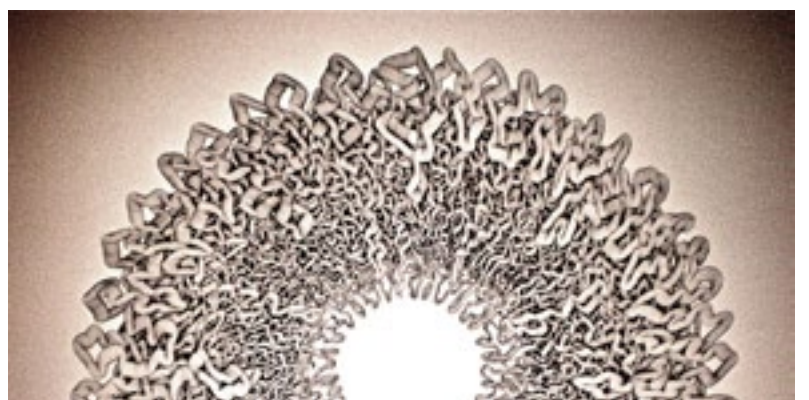


## GALLERY 1 & 2 PXV

**Platform Members Show**  
4 - 19 Dec 2015  
Opening 6 - 9pm, Thurs 3 Dec

This annual exhibition brings together the practices of Platform Arts studio members and current co-directors, showcasing a strong, diverse group of artists.

*[platformartsbelfast.com](http://platformartsbelfast.com)*



## RESOURCE SPACE Alberio

**Gavin Porter**  
4 Sept - 19 Dec 2015

Gavin Porter is a Belfast born artist living in Co Roscommon. Platform have invited Porter to create a wall drawing for our newly developed resource space. The piece titled Alberio comes from a series of hyper-detailed abstract ink renderings, etchings and dry points. These images were created using indeterminate accumulative drawing techniques, applying notions concerning materials process and growth patterns.

*[gavport.com](http://gavport.com)*