



1 Queen St, Belfast BT1 6EA (028) 90311301

## **BELFAST PLATFORM FOR THE ARTS MAIN GALLERY PROPOSAL GUIDELINES**

### **Guidelines**

- Proposals will only be accepted by email to [platformbelfast@gmail.com](mailto:platformbelfast@gmail.com).
- The exhibition proposal form must be completed and attached as a pdf.
- Please include “Proposal: <Your Name>” in the subject line of the email.
- A max of ten items should be used to illustrate your work/proposal. All images should be contained within the body of the pdf file and captioned accordingly.
- The pdf should be titled Proposal <Your Name> and not exceed 10mb in size.
- Film and audio work should be uploaded onto sites such as vimeo, YouTube or personal websites, and links provided within your pdf.
- When providing links to videos please ensure that they work across different platforms and can be viewed on tablets, iPads etc.
- Personal websites, that supplement your biography, are encouraged.
- When providing links to websites that contain relevant information to support your proposal you should provide links to the pages you wished viewed and a brief (50 word) explanation on what will be viewed.
- Platform will not accept proposal submissions that do not meet these guidelines.

### **Eligibility**

Platform seeks proposals from artists and curators from all backgrounds, working in any media or discipline. Prior experience or exhibitions are not a condition of acceptance.

## **The Space**

Platform's main gallery is situated on the top floor of its city centre building (see appendix 1 for floor plan and photographs). It is a large rectangular space with good ambient lighting and an overhead system of movable halogen lights. There is good access to power through a system of power sockets located at ceiling height.

The space has potential for a variety of different applications. You can see installation shots from previous shows on our facebook page, [www.facebook.com/platform.arts](http://www.facebook.com/platform.arts).

## **Funding**

Platform has limited financial resources and is unable to fund travel costs, installation / de – installation, insurance on individual works etc.

Without external funding, Platform budgets a maximum of £300 for an exhibition in the main gallery, and £150 for a UNIT exhibition. It is used solely at Platform's discretion and will normally meet the cost of printing posters and the drinks bar on the opening night.

Applicants should have a good idea of how they intend to fund their show. Platform can provide help and advice in applying for funding both in Northern Ireland and internationally.

## **Scheduling**

Platform schedules shows throughout the year but generally closes the gallery during the month of January.

The average show, wherever possible, runs for three weeks, with a week for installation and de-installation.

Wherever possible Platform schedules the opening nights of shows for the first Thursday of the month. This is to coincide with late night art in Belfast, which increases footfall for the opening night.

Platform will do its best to accommodate requested dates for exhibitions. This may not always be possible due to time or program restrictions.

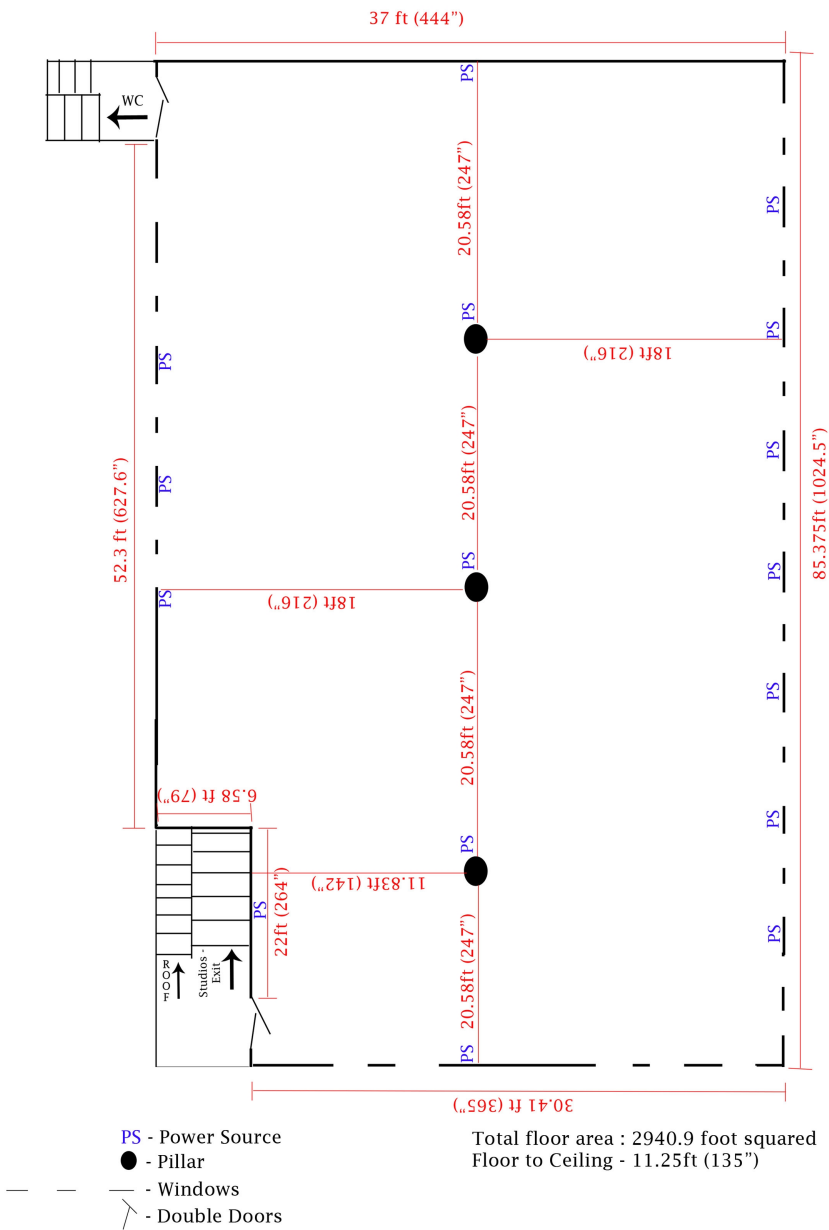
## **Storage**

Due to limited space Platform is unable to store works of art for extended periods of time and all work should be removed from the premises during de-installation.

**Appendices:**

**Appendix 1: Floor Plain Main Gallery**

PLATFORM, NO 1 QUEEN STREET BELFAST.



Appendix 2: **Picture of main gallery from front**



Appendix 3: **Picture of main Gallery from back**

